

An ISO 9001:2008 Company

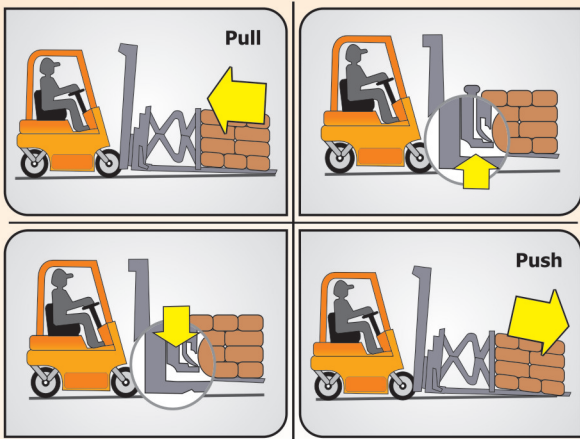


POLYCANTM
EXTRUSION PVT. LTD.

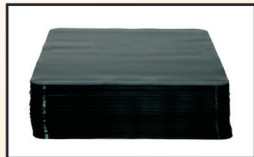
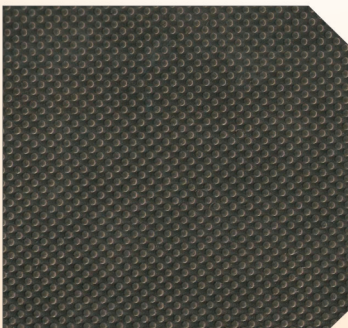
PLASTIC SLIP SHEETS

PALLET-LESS CARGO HANDLING

Plastic Slip Sheets are ideal replacement for wood pallets in transportation and warehouse application.



Plastic Slip Sheets are environment friendly, sustainable and recyclable very cost-saving alternative to Wooden Pallets.



Advantages of Plastic Slip Sheet:

- Reduces material handling weight, labor and equipment hours.
- Allows more products per load.
- Moisture Resistant & Bacteria Resistant.
- Allows warehouse optimization.
- Cheaper than wood pallets.
- 100% reusable and recyclable

Features at a glance:

- Custom tailored to any application, size, color, gauge and surface.
- Extrude polyethylene sheet made from Virgin or Recycled plastic resin.
- Higher tensile strength.
- Non-slip surface.
- Impervious to moisture.